

Case Study

WEALTH MANAGEMENT ALLIANCE

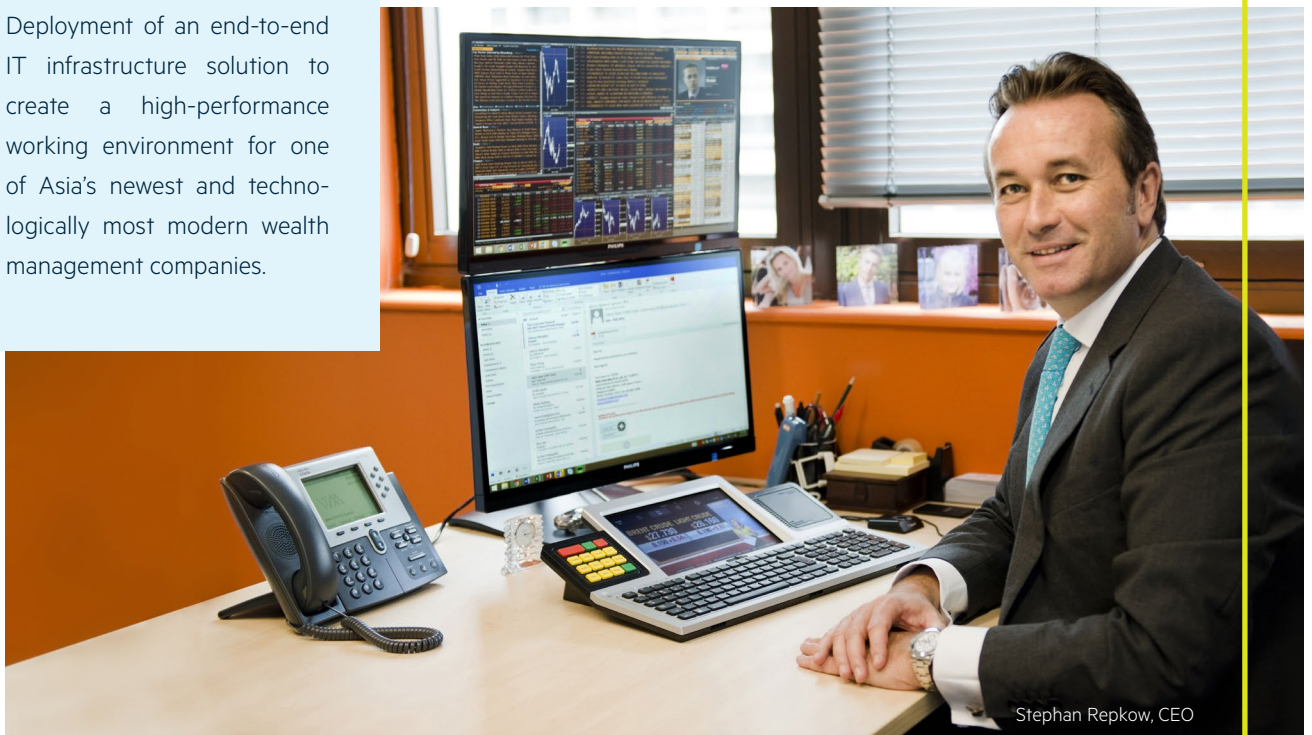
Singapore

Branche

Trading Floors

Project

Deployment of an end-to-end IT infrastructure solution to create a high-performance working environment for one of Asia's newest and technologically most modern wealth management companies.



Stephan Repkow, CEO



Client

Wealth Management Alliance (WMA) is an innovative external asset management and multi-family office, which has been set-up as a fully independent yet integrated wealth management platform.

WMA operates as an incubator for single family offices and as an aggregator of independent private bankers and asset managers. Structured as an alliance of like-minded professional investment advisors, WMA is committed to providing high net worth clients with full transparency on fees and an explicit alignment of interests with a performance-driven remuneration.



Multifunctional keyboard
WEYTEC smartTOUCH
at the workplace.

Challenge

When Wealth Management Alliance (WMA) started to design their new office in Singapore, technology and price were the two main decision criteria. World class working environments for all investment advisors and staff members was key. The goal was to have all PCs and state-of-the-art equipment remotely and securely stored in the server room, but with guaranteed latency-free operations for users.

The project was awarded to WEY Technology Singapore in October 2015, and the system was deployed in only six weeks.



Solution

WEY Technology delivered a “greenfield” solution to Wealth Management Alliance based 100% on WEYTEC in-house manufactured products from Switzerland. Each of the eight offices is outfitted with a state-of-the-art WEYTEC smartTOUCH multifunctional keyboard, which is connected via a WEYTEC distributionPLATFORM to high-performance WEYTEC ultraFLEX miniPCs using IP Remote Transmitters and Receivers. The offices are set up with free-seating, so any advisor can occupy any of the offices' desks and access all of their systems and services from wherever he or she is sitting.

The flagship WEYTEC smartTOUCH multifunctional keyboard feature a 10" touch screen which the WMA staff is using to control all their business information sources and either one, two or three screens on their desktops. Customised programmable keypads ease the interaction with high-priority financial services applications. Built-in brightness sensors adjust the screen to lighting conditions in the office, enhancing the ergonomics of the workplace and promoting energy efficiency. Movement sensors put the keyboard into sleep mode when unattended, improving data security.

All the PCs and back-end equipment are compactly stored in a secure and centralised server room where they are cooled and maintained efficiently. Moves, adds and changes are accomplished quickly and effectively

Facts & Figures

WEYTEC distributionPLATFORM

12 Desks / 22 Screens

15 Sources

Remote Solution

28 IP Remote Transmitters /
Receivers

Desktop Integration

12 WEYTEC smartTOUCH
multifunctional keyboards

COMPUTING Solution

14 WEYTEC ultraFLEX miniPCs



Different applications ...



... at the push of a button.

without any operational downtime. The eight WEYTEC ultraFLEX miniPCs, which provide a high-performance computing power comparable to modern desktop PCs, only take up two 19" chassis, or 6U of rack space and consume approximately 300 watts of power in total.

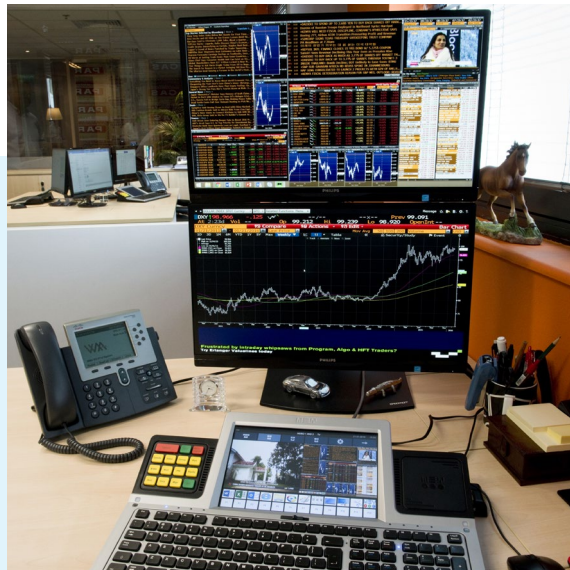


Benefits

Flexibility is a key benefit of WEYTEC's state-of-the-art solutions. In addition to utilizing a mini-trading facility complete with Bloomberg market data, investment advisors also use their WEYTEC smartTOUCH keyboards with the 10" colour touch screen to stream video and keep abreast of the markets by watching business TV. As always, all systems, screens and services can be controlled with a single WEYTEC smartTOUCH keyboard.



The screen of the WEYTEC smartTOUCH keyboard



... is also suitable for the display of any desired source.

Testimonial

Mr. Stephan Repkow is the Founder and CEO of Wealth Management Alliance, and was previously the Asia CEO of Union Bancaire Privée Private Banking, where he used and was familiar with the flexibility and robustness of WEYTEC multifunctional keyboards.

He states that, "A small start-up like ours needs to be as flexible as possible and WEYTEC offered us the nimbleness we needed. WEYTEC coordinated well with other stakeholders and vendors, and absolutely fulfilled all our requirements at a reasonable price. WMA has found with WEYTEC not only a very efficient solution for its technological requirements, but also fantastic support and commitment from the WEYTEC Asia Pacific team. My overall opinion is excellent and I would definitely recommend WEY Technology as a manufacturer, system provider and integrator."



Conference room with smartTOUCH keyboard as control unit.