

**WEYTEC**

**Do it smart.**

# WEYTEC SOLUTIONS

For High Performance Workplaces



# WEYTEC MAKES COMPLEX WORKPLACES SMART.

**WEYTEC focuses on humans beings  
at their workplaces to assure  
ergonomics and efficiency.**

## Contents

01 Workplace Optimization	4
02 KVM Matrix	14
03 KVM over IP	22
04 Mini Computers	30
05 Visualization	38
06 Integration	46
07 Workplace Recording	53



**"TOMORROW'S  
TECHNOLOGY FOR  
WORKPLACES TODAY"**



# WORKPLACE OPTIMIZATION

## 01

### Ergonomic Workplaces



#### Take control of the situation

Security and efficiency are top priorities in high stress environments such as trading floors and control rooms. Staff members must be able to fully focus on their tasks day and night. Ergonomic workplaces are a must.

Traders and operators need to concentrate on core processes without the distraction of switching between different systems. WEYTEC solutions provide a modern user experience and facilitate an integrated workplace.

The multifunctional WEYTEC smartTOUCH keyboard reduces the user interface to a single device. It is the optimal solution when...

- ... you want to control all your applications, computers and screens with a single keyboard and mouse.
- ... you need to work more quickly, securely and productively.
- ... you need to react immediately and purposefully to events.
- ... you must always stay in complete control and maintain the overview.
- ... ergonomics is important to you.

Create the perfect workplace environment with an intelligent multifunctional keyboard. They are configurable, modular and expandable. WEYTEC solutions are 100% compatible with practically any user, hardware and application requirements.

# WEYTEC SMART TOUCH

The WEYTEC smartTOUCH keyboard is the optimal input device for secure, comfortable and efficient workflows. Operate all computers, wherever they are, easily and intuitively with a single keyboard and mouse. Additional devices are superfluous.

Concentrate on what is important, keeping key processes and sensitive data under complete control – whether working on a screen, a video wall or directly on the integrated touch display. Connect and interact directly with third party systems such as smart building automation. The keyboard functionality is almost limitless.

The WEYTEC smartTOUCH keyboard creates modern, high-performance workplaces with fast reaction times and efficient workflows – ideal for 24/7 operations.

## **Your Benefits**

- Optimal ergonomics and user experience
- Reduced complexity
- Intuitive navigation - execute tasks faster
- Adaptable to individual user needs
- Robust and future-proof technology
- Gold standard for high-performance work environments





# FEATURES



## Modern Touch Screen

The world is at your fingertips. The unique landscape-mode touch screen takes ease of use to a whole new level. All your PCs and sources are visualized on the user-friendly display. Drag and drop information sources onto monitors or video walls and move effortlessly between them.



## Individual Applications

Extend the functionality of your touch screen with individual applications – similar to apps. From video integration and event visualization to specific corporate applications – everything is possible.





## Practical Keypads

Optimize your workflows. Use the versatile and customizable keypads to assign your most important commands and shortcuts to physical keys. This ensures lightning-fast reactions, to initiate an operation or respond immediately to a situation.



## Intelligent Sensors

Save energy and protect your eyes. Light sensors automatically adjust the brightness of the screen to the ambient environment for optimal illumination and energy efficiency. Motion sensors detect user presence and put the keyboard into sleep mode when unattended.

# FEATURES



## Comfortable Operation

Let your fingers glide over the keys. Sophisticated key switch technology ensures a more comfortable typing experience. The rubber-coated ergonomic hand rest further enhances ease of use.



## Flexible Teamwork

Work more flexibly than ever before. A quick ejection mechanism releases the key panel from the housing unit so that users who share desks can still work on their personal keyboards. Hygienic working conditions are thus guaranteed.



## Outstanding Acoustics

Integrated loud speakers optimize sound quality. You can forget all about extra cabling to external speakers and just enjoy excellent stereo sound.



## Interfaces

The keyboard comes with a wide variety of interfaces to directly connect peripheral devices.

# HIGHLIGHTS

## WEYTEC smartTOUCH Software Toolbox

**Capture** - saves desk space

The WEYTEC Capture solution is perfect when space on the desktop is limited. Display any video source as a freely scalable picture-in-picture window on your existing desktop and eliminate the need for additional screens.

**Focus** - for dynamic control

The WEYTEC Focus solution automatically adapts the layout of the function keys in the touch screen to your active application, making it easier than ever before to focus on your key processes.

**Mouse Switching** - for easy switching between PCs

Switch and toggle between PCs just by moving the mouse cursor from one screen to another. With MOUSE SWITCHING it is fast and intuitive to take control of any of your systems.

**Copy-Paste** - the cross-computer clipboard

With the copy-paste feature, users can copy and paste data from Windows applications across multiple computers.

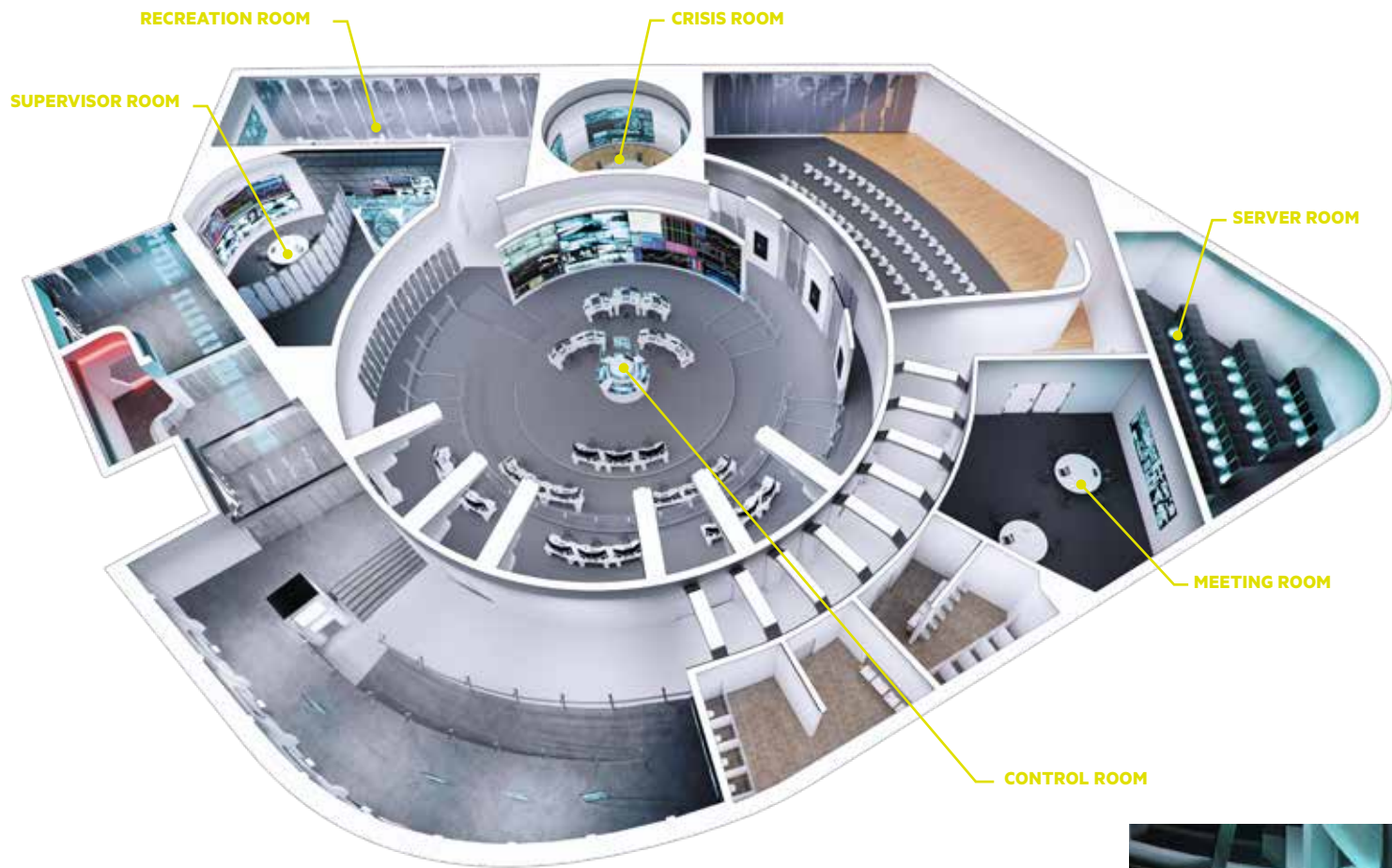
### Your Benefits

- **Availability**  
Flexible and extendable thanks to the modern design
- **Cost effectiveness**  
Swiss quality products with long life cycles
- **Performance**  
Efficient workflows with faster interactions
- **Ergonomics**  
Ultimate ease of use with intuitive user navigation



12  
13





**"REAL TIME ACCESS TO  
ALL YOUR INFORMATION  
SOURCES"**





# KVM MATRIX SOLUTIONS

## 02

### Optimal Working Environments



### Collaboration on all Levels

Managing workflows on trading floors and in control rooms may require efficient collaboration between teams at different locations. Traders and operators must be able to react independently of time and place, and quickly change desks if need be. KVM Matrix solutions from WEYTEC are the answer, creating optimal working environments for users who have to make the right decisions on time, every time.

Sometimes traders and operators only have access to some of the information they need, and they painstakingly switch back and forth between different information sources. This wastes time and increases the risk of error.

KVM Matrix solutions from WEYTEC optimize your working environment, when...

- ...you want to securely distribute all information sources within your organization.
- ...system outages are not an option.
- ...you want to extend collaboration across multiple sites.
- ...users are working in a mixed PC environment.
- ...free seating is required.

Create a future-proof workspace which simplifies workflows and fosters efficiency within your organization. With WEYTEC KVM Matrix solutions you have everything under control.

# WEYTEC DISTRIBUTION PLATFORM

The WEYTEC distributionPLATFORM provides users with access to all applications, information sources and computers – even across multiple sites. It integrates analog, digital, legacy and third party systems as well as cameras and video walls within a single, independent IP network. No special software or drivers are required.

The primary objective is to enhance user collaboration. This is achieved by enabling free seating and ensuring seamless communications between multiple locations.

WEYTEC solutions eliminate expensive moves, adds and changes to infrastructure. And the best part is that user needs always stay in focus. Traders and operators can customize their view of, control over and interaction with relevant sources.

The WEYTEC distributionPLATFORM has a modular architecture and is fully scalable to meet changing requirements.

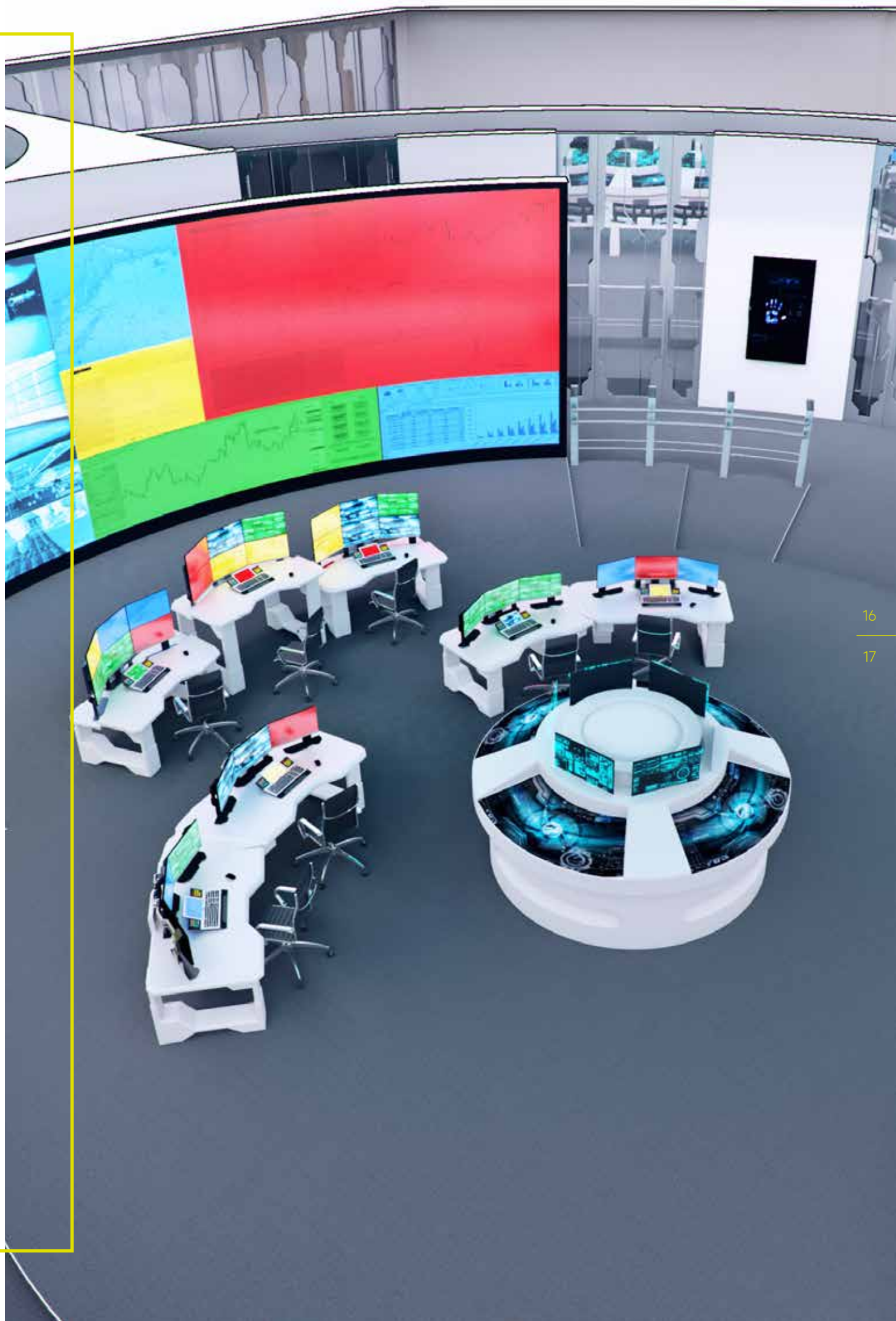
WEYTEC clients only purchase what they actually need. Expanding the system at a later date is always possible without replacing existing hardware or infrastructure.

Information can be transmitted simultaneously to multiple monitors and video walls. This saves time and enhances the overview in any situation.

WEYTEC clients rely on tomorrow's technology for workplaces today. WEYTEC solutions are characterized by their modern design, future-proof technology and investment protection.

## Your Benefits

- 100% availability
- Collaboration across multiple locations
- Free seating
- Customizable to meet individual needs
- Scalable and future-proof technology
- Modern high-performance working environments







**BACKUP  
LOCATION**

**SECONDARY  
LOCATION**

**PRIMARY  
LOCATION**

# BUSINESS CONTINUITY

## Uninterrupted Workflows in Every Situation.

A changing world requires flexible working environments. Protect your business by preparing for a loss of premise, staff or IT services, and ensure the full availability of critical information even in the event of a disaster.

The WEYTEC distributionPLATFORM is uniquely well suited to address this challenge. Multiple main and backup locations can be integrated into an operational Business Continuity design. This ensures continuous collaboration across multiple sites.

The big benefit is that a disaster recovery plan based on the WEYTEC distributionPLATFORM provides business continuity for companies after a short to medium term loss of critical resources at any site. The risk of a total loss of critical resources can be substantially reduced to almost zero.

### Your Benefits

- **Availability**  
Fail-proof concepts to avoid operational disruptions
- **Cost effectiveness**  
Eliminate expenses for cold standby solutions
- **Performance**  
Full functionality from any location
- **Ergonomics**  
Low stress Disaster Recovery scenarios

# HIGHLIGHTS

## WEYTEC distributionPLATFORM

### Access to all applications

The WEYTEC distributionPLATFORM provides virtually latency-free access to an unlimited number of sources.

### Full Integration of video walls

Every computer and client can be displayed on one or more video walls or individual screens.

### Intuitive control via KVM

Users can quickly and intuitively navigate to sources for specific actions, and then either release the sources or share them with colleagues.

### Non-intrusive

The installation is not intrusive and requires neither software nor driver installations on the computers. Any source can be integrated, regardless of its operating system.

### Clever reporting

The integrated reporting module logs all incidents of user access to the sources.

## Your Benefits

- **Availability**  
Resilient system design for high reliability and availability
- **Cost effectiveness**  
Investment protection with future-oriented technology
- **Performance**  
Fast and easy to use
- **Ergonomics**  
Customizable to meet individual requirements





20

21



**"ACCESS YOUR SYSTEMS  
IN REAL TIME, WHEREVER  
THEY ARE HOUSED."**



# KVM OVER IP SOLUTIONS

03

Sources housed in centralized server rooms



## Extended access to your computers

When concentration is at its highest and every second counts, an ideal working climate is essential. Removing PCs from the trading floor or control room environment eliminates heat and noise emissions as well as electromagnetic radiation from the workspace. This significantly improves the health and comfort of traders and operators. It also saves valuable floor space in the working environment.

WEYTEC KVM over IP solutions moves all your PCs and information sources away from the desk to a centralized server room where they are securely located, cost-effectively cooled and maintained with simple efficient workflows. This saves electricity, increases the average life span of hardware, precludes breeches of IT security and virtually eliminates expensive moves, adds and changes. And in case of a PC failure, users can switch instantly to a spare device. WEYTEC KVM over IP solutions enhance workflow efficiency, workspace ergonomics and IT security. They are the optimal solutions when...

- ... you need to protect your IT assets and guarantee data security.
- ... a healthier and more comfortable working environment is important.
- ... moves, adds and changes should be executable without cost or delay.
- ... you want the benefits of "hot desking" to use office space more effectively.
- ... Green IT is important to your organization.

22

23

# WEYTEC IP REMOTE

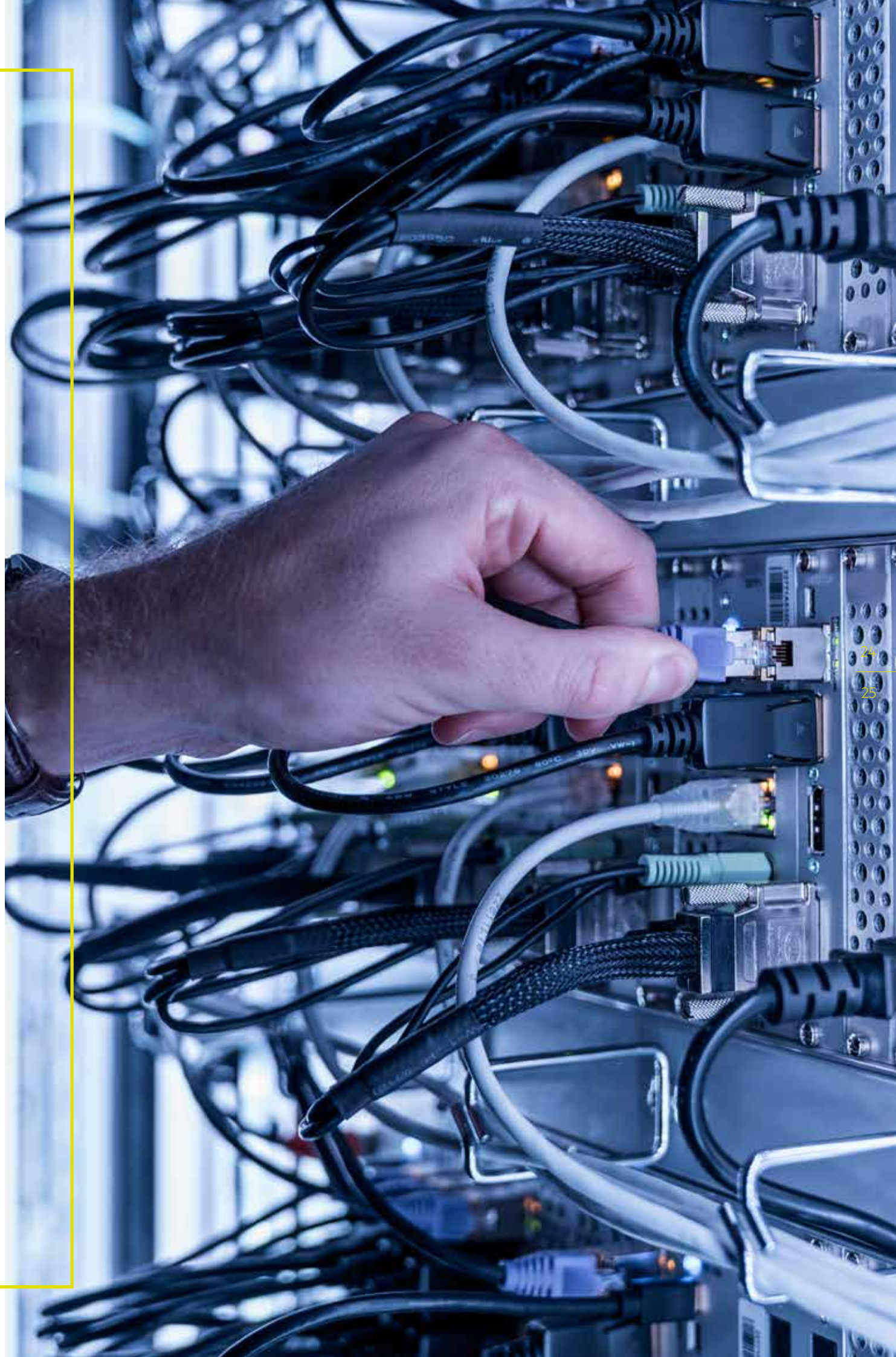
ipREMOTE transmitters connect directly to workstations or other information sources, while receivers connect to peripherals and are located at the desk. A selection of chassis is available to mount the cards; from small desk models to standard 19" 3U chassis for high port density in the server room, with either integrated or external power supplies.

Whether as stand-alone KVM extenders or as essential components of a WEYTEC distributionPLATFORM, WEYTEC ipREMOTE extenders are known for their robust quality and flexibility. One of the most significant benefits of an ipREMOTE solution is its compatibility with existing IP networks. Technically speaking, all IP networks can host ipREMOTE solutions.

## **Your Benefits**

- Eliminate heat, noise and electromagnetic emissions in the office
- True hot desking
- Optimize costs with reduced desk footprints
- Protect IT assets and guarantee data security
- Optimize energy costs with efficient cooling
- Eliminate costly moves, adds and changes
- Independent of hardware vendors



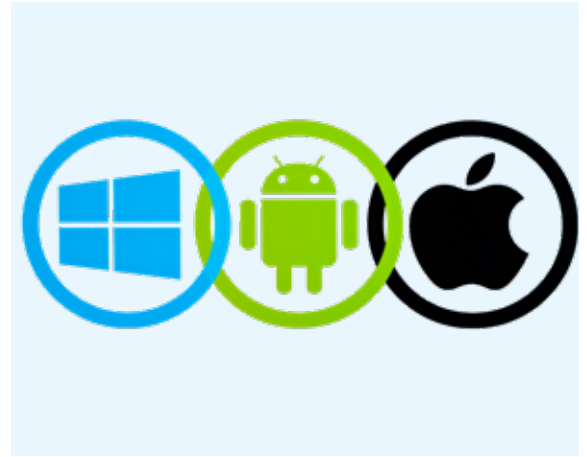


# FEATURES



## **Independent IP Network**

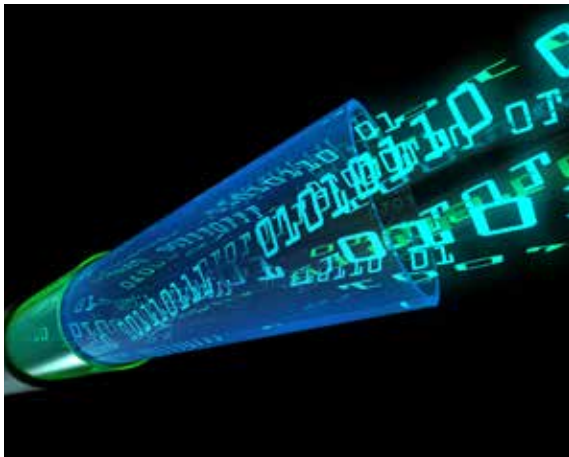
The ipREMOTE protocol is based on standard TCP/UDP communication. Depending on the characteristics of the infrastructure, WEYTEC's IP-based solution eliminates distance restrictions between computers and desktops.



## **Platform Independent**

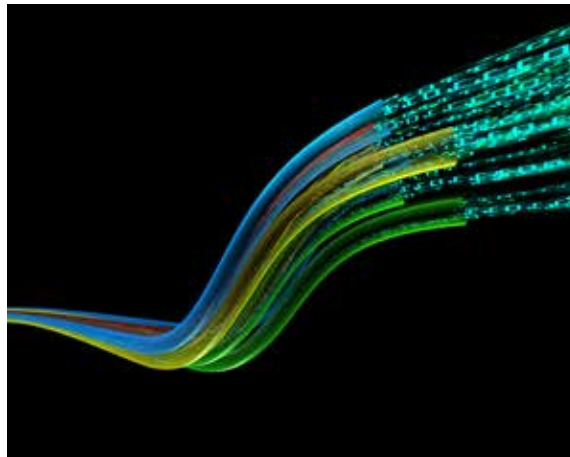
The solution is platform independent and PC integrity is completely assured. 100% of computing power is always available and no software or drivers are required.





### **Real Time Access**

Users remote control their PCs over LAN/WAN infrastructure, in real time.



### **True Channel Communications**

True Channel Communications means that every physical port on a PC is transmitted over a separate channel. Thus, you can connect digital and analog video, DDC, audio, USB, PS/2 and serial data signals from any computer to any workplace. All channels can be switched independently and in any combination with each other, for true flexibility.

# HIGHLIGHTS

## WEYTEC ipREMOTE

### Lossless Transmission

Ingenious compression technology with lossless transmission minimizes bandwidth requirements

### Use existing infrastructure

Supports copper, multi-mode or single-mode fiber infrastructure

### Unlimited number of connections

Unicast and multicast communications for an unlimited number of connections

### Investment protection

Investment protection with scalable, modular solutions without supplier-specific legacies

## Your Benefits

- **Availability**  
Access any computer or source channel from any desk, switch instantly to spares
- **Cost effectiveness**  
Eliminate costly moves, adds and changes
- **Performance**  
Non-intrusive solution guarantees 100% availability of computing power
- **Ergonomics**  
Emissions-free workplaces







**"HIGH PERFORMANCE,  
LOW POWER, VERY SMALL  
FORM FACTOR PC"**



# MINI PC SOLUTIONS

## 04

### High End Computing



#### **Flexibility, security, speed and energy efficiency**

When space is limited but the business requires flexible, high-performance computing power, miniPC solutions from WEYTEC are the answer.

WEYTEC miniPC solutions provide a highly configurable platform for a multitude of applications. They are the optimal solution when...

- ... users need the agility and flexibility of virtual and hosted desktop solutions.
- ... high performance users work in a mixed environment with both high-end thin clients and hybrid desktop computers.
- ... IT managers need small footprint solutions at the desk and in the system room.
- ... customers seek low-power Green IT solutions.

# WEYTEC ULTRA FLEX

The ultraFLEX miniPCs are full function computers optimized for size and power consumption. They are deployable as thin clients or full-fledged high-performance PCs, appropriate for hybrid desktop and virtualized environments.

ultraFLEX miniPCs satisfy requirements in the most demanding multi-screen environments due to the enormous graphics output. A single ultraFLEX can drive up to seven screens supporting ultra-high 4K resolutions. The cooling design keeps the ultraFLEX almost completely silent.

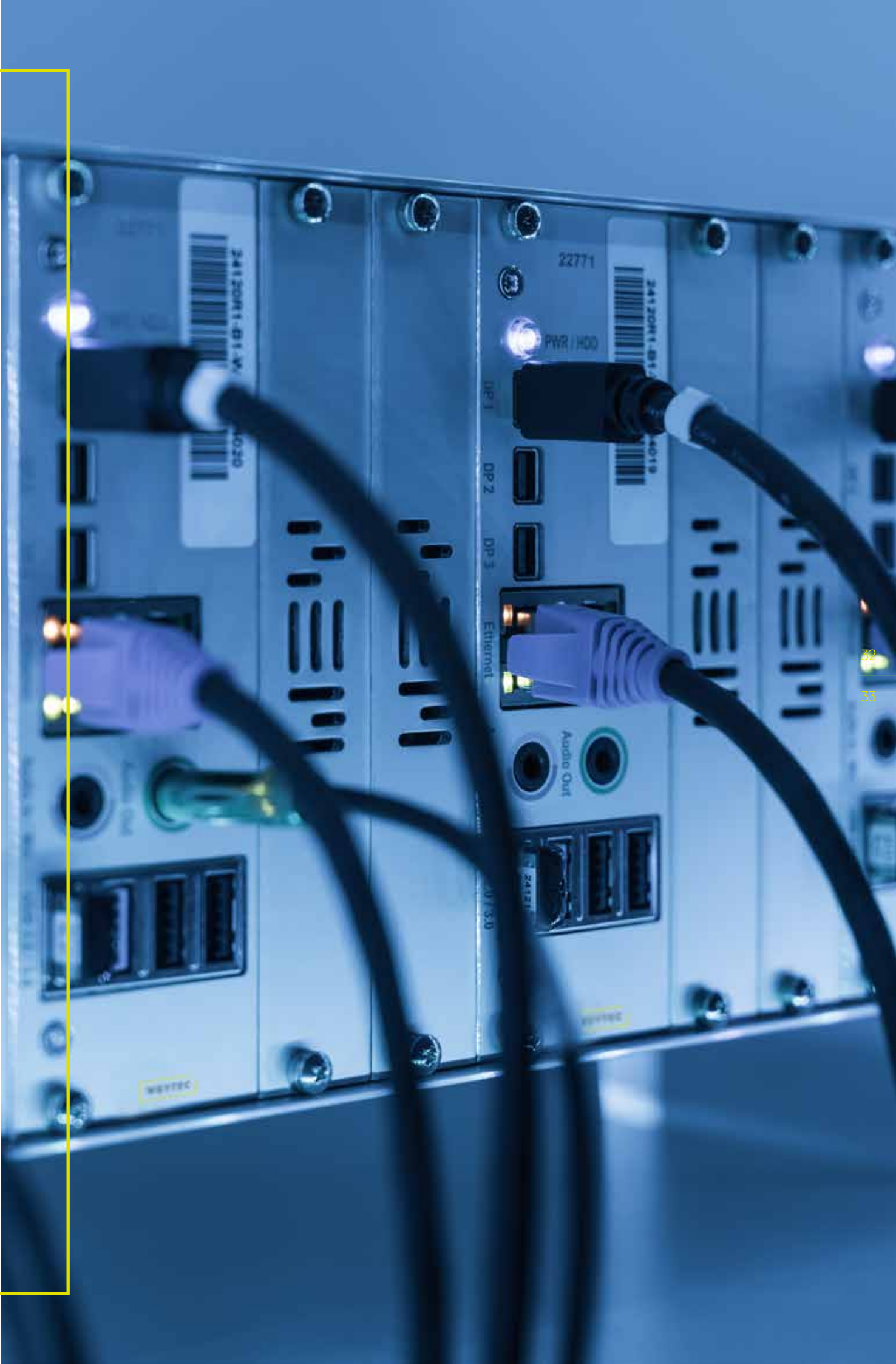
ultraFLEX miniPCs come in the space-saving standard Eurocard form factor. The two, three and four slot versions require adjacent slots in a standard Eurocard chassis. Designed to be extremely compact, ultraFLEX miniPCs are mounted in a standalone desk chassis or a 19" chassis, both available with single or redundant power supplies.

Every ultraFLEX can be customized to meet individual user needs. They are available with a variety of processors and memory configurations and for multiple operating systems.

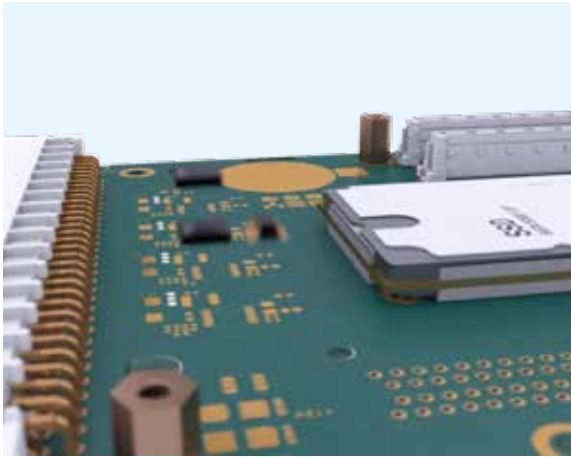
## **Your Benefits**

- Dual SuperSpeed 3.0 USB Ports
- Dual High Speed USB 2.0 Ports
- Dual SATA III
- DisplayPort / Mini DisplayPort
- Dual RJ45 for Gigabit Ethernet
- Audio Out: 16-bit stereo
- Audio In: Microphone or Line-in





# FEATURES



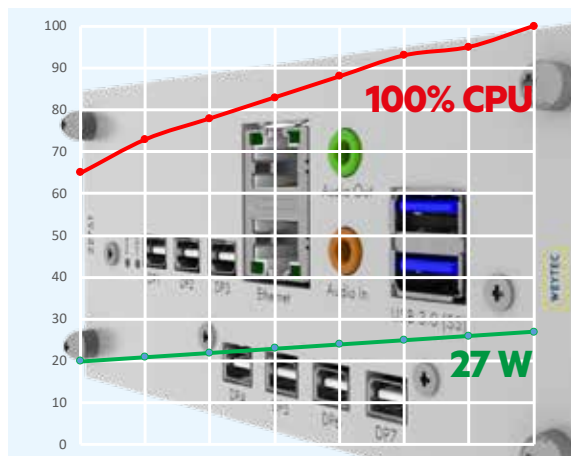
## **SSD / RAID Technology**

ultraFLEX miniPCs use SSD (Solid State Drive) technology for fast booting and high performance.



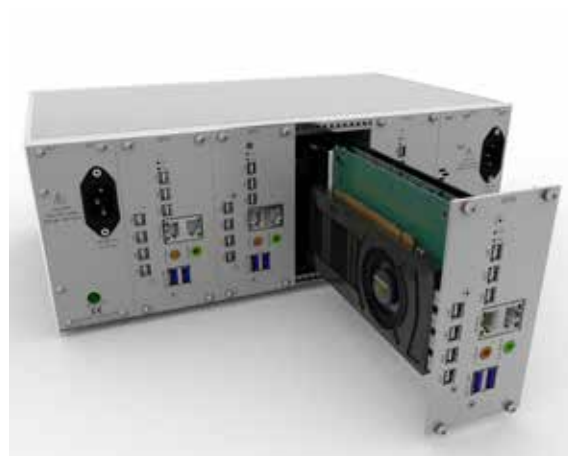
## **Dual Gigabit Ethernet**

Dual Gigabit Ethernet ports provide two IP addresses so that the ultraFLEX can run in two independent networks.



## Power to Performance Ratio

Low power consumption is at the heart of the ultra-FLEX miniPC, ensuring high performance with a very low carbon footprint. Power consumption is only 10W when driving two screens, or 20W with three screens.



## Redundant Power Supplies

Redundant power supplies for both desk and rack versions provide another level of security.

# HIGHLIGHTS

## **WEYTEC** **ultraFLEX miniPC**

### **Flexibility**

Deployable as a thin client or a high-performance PC.

### **Customizable**

Individual CPU and RAM configuration options.

### **Powerful Graphics**

Supports 4K resolutions and capable of driving two, three, five or seven screens.

### **Efficiency**

Immense power at an incredible density.

### **Quality**

Made in Switzerland with the highest attention to quality and workmanship.

### **Your benefits**

- **Availability**  
Redundant power supplies, dual ethernet and hot-swappable rack versions
- **Cost effectiveness**  
Very low power
- **Performance**  
Immense speed and computing power
- **Ergonomics**  
Silent operation and minimal heat emissions





36

37







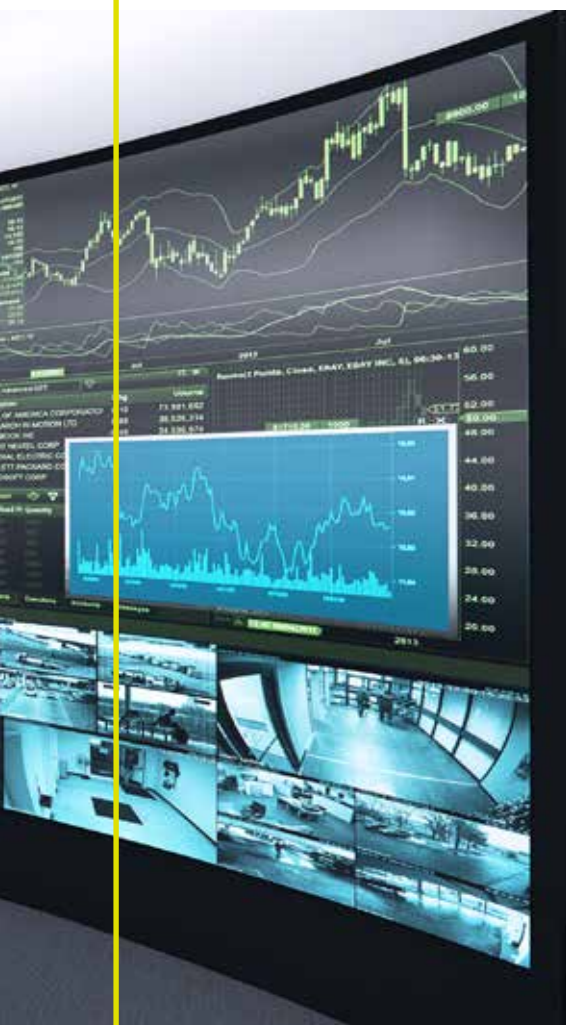
**"THE MOST INTELLIGENT  
IMAGE PROCESSING AND  
PRESENTATION SOLUTION"**



# VISUALIZATION SOLUTION

## 05

The complete overview



### State-of-the-art visualization technology

In operation centers and control rooms, large screen systems with razor sharp images and high resolution pictures are a must.

The combination of WEYTEC components and the deployment of modern video wall technology delivers fully integrated visualization solutions with extremely high reliability for 24/7 operational environments.

WEYTEC clients can choose between a wide variety of video wall technologies, from a full range of LCD screens and rear-projection cubes to the newest LED panels. All solutions are highly customizable and deliver brilliant image quality.

Signals from the broadest variety of sources such as TV tuners, PCs and video cameras are displayed on screens which can be arranged in virtually any horizontal and vertical constellation. Sources are freely scalable and positionable on the video walls.

# WEYTEC SMART VISUAL

The WEYTEC smartVISUAL solution transforms an entire display environment into a visual workspace with a boundless pixel area. It integrates separate displays into a continuous visualization surface, across which operators can react and interact more efficiently. The hardware-based IP solution from WEYTEC provides full performance with minimal latency.

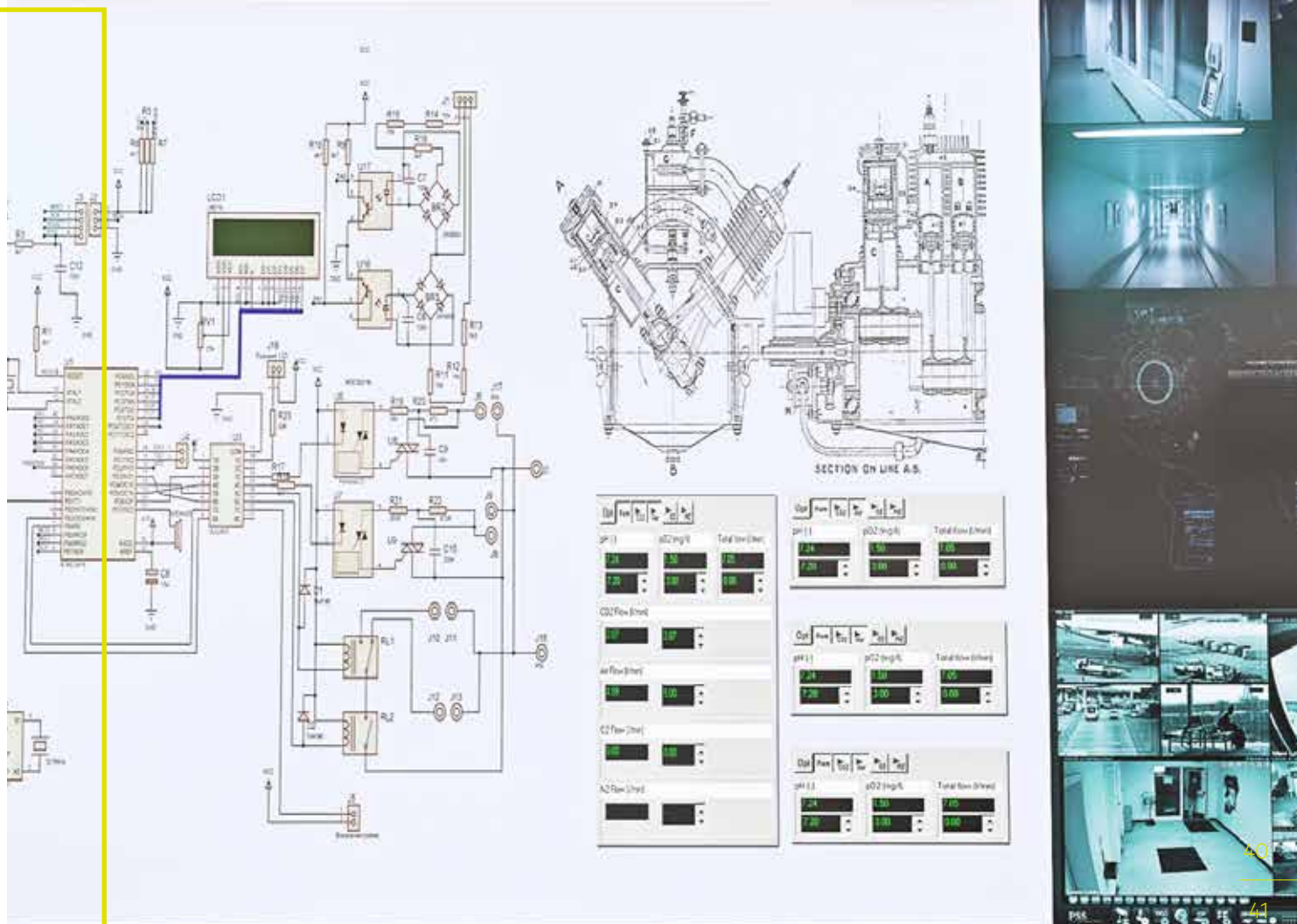
Using the WEYTEC smartTOUCH keyboard, users can display any and all sources and applications at will across their individual pixel areas – including dedicated screens, a shared video wall or even displays in an adjoining room.

All sources can be individually placed, scaled and moved around within the “personal” pixel surface. You can also use a single screen for the simultaneous display of multiple sources. The architecture is fully expandable to accommodate a virtually unlimited number of sources and screens.

## **Your Benefits**

- Made for 24/7 environments
- Fully integrated with WEYTEC solutions
- Brilliant image quality
- A choice of state-of-the-art video wall technologies





# LED / LCD TECHNOLOGY



## **LED Rear Projection Cubes**

Rear projection cubes based on LED (Light-Emitting Diodes) technology have been developed for video walls in 24/7 environments such as modern control rooms. Tried-and-true LED technology eliminates the so-called “burn-in” and “memory” effects. Manufacturers guarantee spare parts availability for a minimum of 10 years.



## **LED Panels**

LED video walls present virtually seamless visual areas, with ultra-narrow bezels between screens. LED panels can be built into practically boundless arrays, for example, for auditoriums and lecture halls.



## LCD Video Walls

LCD (liquid crystal display) monitors and video walls deliver extremely bright, high-resolution images in brilliant colors. LCD video walls are known for their shallow installation depth and ultra-narrow bezels between screens.

LCD video walls are extremely reliability and well-suited for the display of dynamic images in 24/7 environments. LCD video walls enjoy long lifespans, with MTBF (Mean Time Between Failures) of over 50,000 hours. LCDs are composed of solid-state electronics with no moving parts.

# HIGHLIGHTS

## WEYTEC smartVISUAL

### smartVISUAL Master

The smartVISUAL master unit can manage multiple real and virtual video walls with different resolutions. It has a web-based user interface to manage and control a complete video wall system from any end device that can display web pages, e.g. a WEYTEC smartTOUCH keyboard, PC, tablet or smartphone. For easy operation, a graphics editor provides a live preview of the large screen and its windows, including the size, position and bezel correction. The master unit also manages all sources and source names as well as individual network and video settings.

### smartVISUAL Receiver

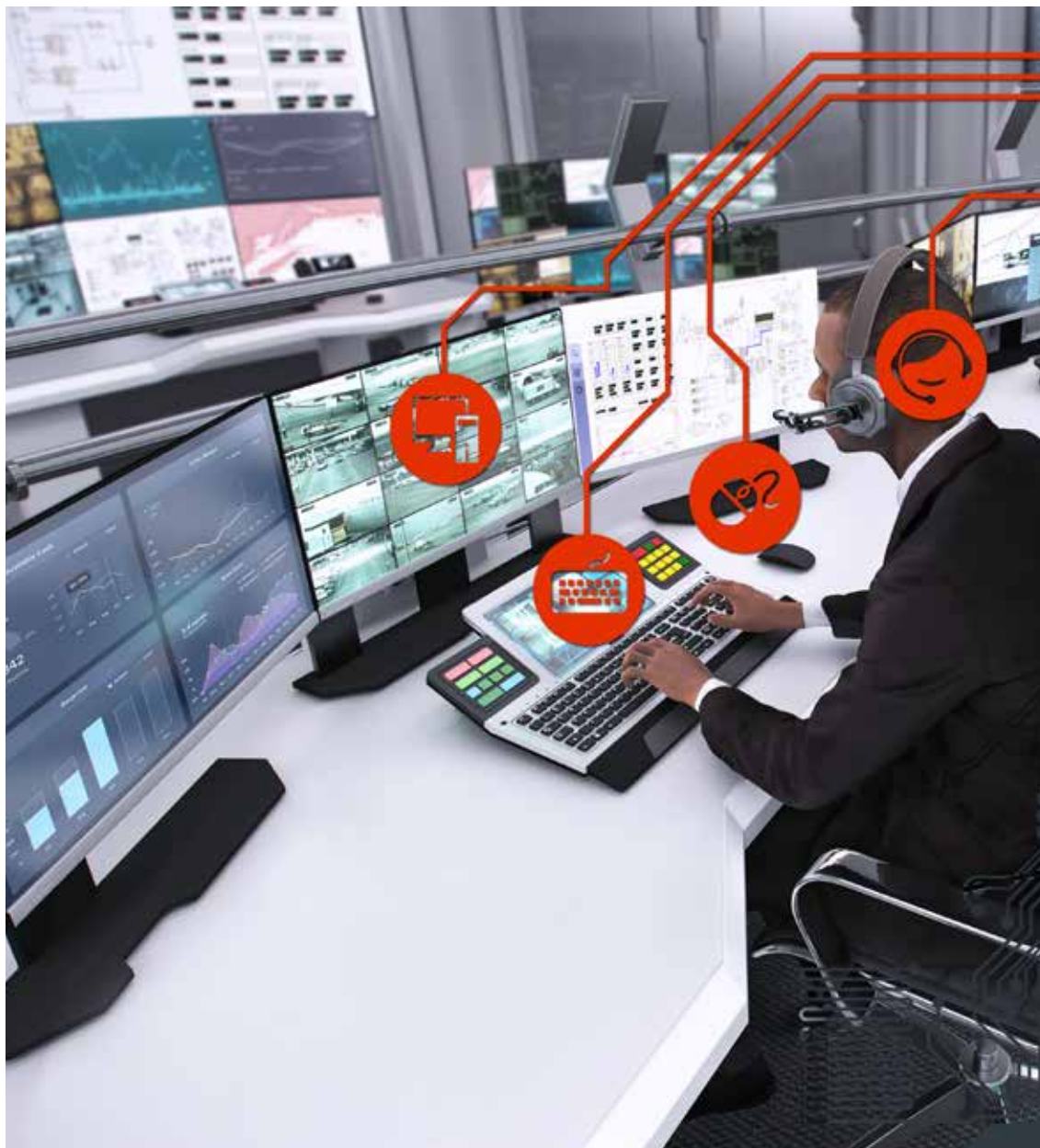
The smartVISUAL receiver decodes and displays network streams, such as video streams from a WEYTEC distributionPLATFORM, images, text, remote desktop protocols and any other source that can be converted into a digital video format. It supports resolutions up to 4K (4096x2160@60Hz) over DisplayPort. The solution is hardware-based, without software installations on systems or sources, and fully independent of operating systems.

### Your Benefits

- **Availability**  
Robust technology for 24/7 environments
- **Cost effectiveness**  
Modular architecture integrates an unlimited number of sources and screens
- **Performance**  
Freely scale and position sources on screens
- **Ergonomics**  
Fast toggling with presets







**"SECURITY FOR MISSION  
CRITICAL WORKPLACES"**



# RECORDING SOLUTION

## 06

Record and replay  
multimedia information



**Recording exactly what occurs helps reconstruct incidents for post-incident analysis, reporting, process optimization, training purposes and technical investigations.**

Capturing the situation operators experience at any given moment can be crucial in such diverse environments as control rooms for public safety, utilities, transportation services and industry as well as financial trading floors.

The overall goal is to replicate and replay the exact digital environment at the time of an incident or transaction. Records must be securely stored and easily accessible. Advantage workplace recording solutions are the answer when...

- ... legal compliance requires voice, screen, keyboard and mouse recording.
- ... mission-critical workplaces should feature incident recording and replaying functions.
- ... you want to fully integrate workplace recording with a WEYTEC KVM Matrix solution.
- ... recording landscapes need to be cost-effective, secure and efficient.

# WEYTEC SKYREC BLACKBOX

In collaboration with SkySoft ATM, a subsidiary of Skyguide, WEYTEC develops and manufactures the hardware-based multimedia recording tool. This non-intrusive solution captures very high resolutions screens (including UHD), as well as audio channels, mouse clicks and keyboard input.

Administrators can access recorded data within seconds, and synchronously replay voice, video and serial channels. The SkyRec BlackBox solution precisely reconstructs digital workplace environments at the time of incidents in control rooms. An enhanced OCR (Optical Character Recognition) search engine means that users can retrieve and replay specific events immediately. Incident reporting has never been easier to perform and share.

## **Your Benefits**

- Satisfy legal compliance requirements
- Incident analysis, reporting and training purposes
- Process optimization
- Fully integrated with WEYTEC KVM Matrix solutions



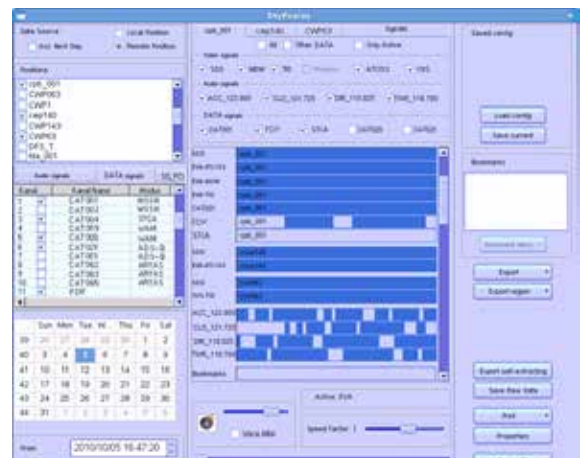


# FEATURES



## Flexibility

The modular design provides optimal flexibility regarding the number and types of signals to be recorded. Depending on the model, one can record “at the glass” – suitable for a single video signal at a monitor or video wall, “at the desk” – suitable for KVMA (keyboard, video, mouse, audio) signals from multiple sources accessed by the operator, or in the server room – suitable for recording multiple information sources in parallel.



## Synchronized Replay

A unique HMI (Human Machine Interface) provides immediate access to periods of interest with an enhanced search tool. The synchronized data can be exported to standard media devices, such as USB sticks, DVD, CD, portable HDD, etc. The solution features synchronized multimedia replay of audio, video, serial channels, mouse and keyboard data to completely recreate an event.



## Compression

State-of-the-art lossless compression technology minimizes data storage and bandwidth requirements. Recorded material is identical to the original. The data is not altered, even when compressed more than 25,000 times.



## Ease of Maintenance

The SkyRec BlackBox solution is easy to maintain with hot-pluggable components and recording cards. The fail-safe equipment boasts very high MTBF levels of approximately 60,000 hours.





**“REACT QUICKLY AND  
INTUITIVELY TO  
EVENTS.”**





# INTEGRATION SOLUTIONS

07

Customized System Integration



## **Initiate the correct measures in the event of an incident**

Control room managers deploy WEYTEC smartCONTROL to optimize the efficiency and security of their processes. The customized solution enables users to concentrate on their core processes and initiate the correct measures in the event of an incident.

WEYTEC smartCONTROL captures events coming from output devices such as PCs and third party peripherals, and processes them in a server for logging, monitoring and visualization on screens and video walls. Upon the occurrence of a defined event, WEYTEC smartCONTROL triggers a notification, an alarm or another action.

Choose WEYTEC smartCONTROL when...

- ... you want to trigger alarms and other events on devices with a network connection.
- ... you need to monitor systems and detect performance thresholds.
- ... you want to fully integrate event management with a WEYTEC distributionPLATFORM solution and control it all with a smartTOUCH keyboard.
- ... you would like to administer building automation features such as lighting, windows, climate and access control with your smartTOUCH keyboard.

52

53

# WEYTEC SMART CONTROL

WEYTEC smartCONTROL is a man-machine interface that integrates your peripheral systems, such as facility management, alarms, access control and video surveillance with the WEYTEC distributionPLATFORM - and transforms your workplace into an ergonomic cockpit.

WEYTEC smartCONTROL provides a flexible, secure, event-based control of processes and workflows from any workplace. It coordinates the interplay among diverse systems to create unified event management scenarios. Alarms are distributed to specific users or user groups. Thanks to responsive HTML visualization capabilities, events can be controlled and displayed on a variety of devices such as thin clients, mobile devices, video walls and WEYTEC smartTOUCH keyboards.

WEYTEC smartCONTROL solutions use standard and customized interfaces to connect the WEYTEC distributionPLATFORM and third party systems to an event management server. The server captures and logs incidents or changes in status, and generates visual and acoustic alarms or other actions. WEYTEC smartCONTROL makes it possible to display a web interface on the smartTOUCH keyboard..

## **Your Benefits**

- Streamline workflows to stay focused on key processes
- Never overlook another alarm
- Control the video wall from a keyboard, tablet or phone
- Control windows and lighting from your WEYTEC smartTOUCH keyboard
- Integrate diverse devices into your WEYTEC solution
- Customize your WEYTEC solution to meet individual needs



54

55

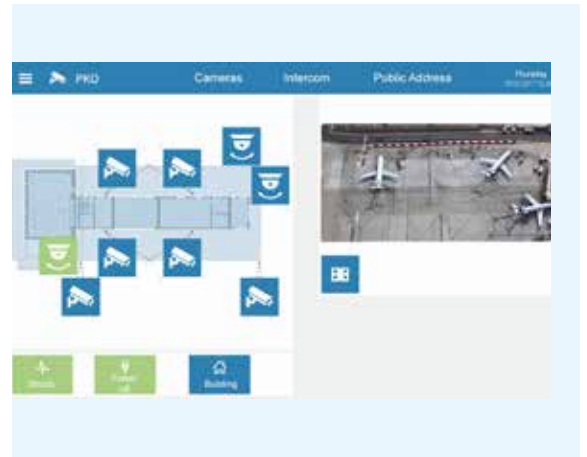


# FEATURES



## Visualize Alarms

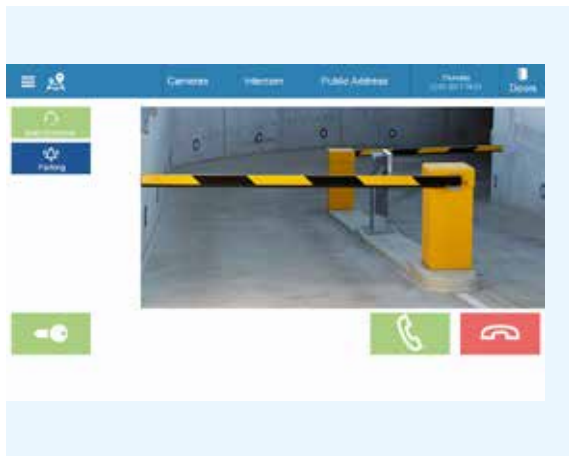
When any type of alarm is raised, such as a smoke detector, WEYTEC smartCONTROL captures the signal from the alert and visualizes it on a video wall or on a WEYTEC smartTOUCH keyboard.



## Facility Management

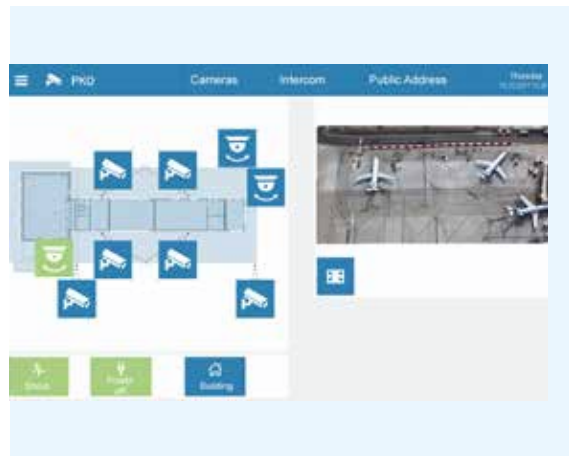
Users can control a host of facility management features for lighting, blinds, windows, etc. using the touch screen on the SMARTtouch keyboard.





## Access Control

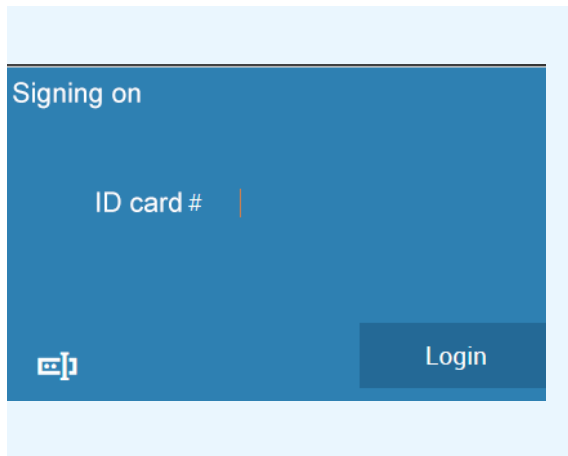
Now operators can interact with intercom systems and even unlock doors by pressing a key on the smart-TOUCH keyboard, all from the comfort of their desks.



## Video Surveillance

When an unauthorized person appears on a video surveillance camera in a secured area, WEYTEC smart-CONTROL can pick up the alarm and project the video surveillance camera output onto any predefined screen.

# FEATURES



## Log-on Procedures

With WEYTEC smartCONTROL, a control room operator can identify himself using a badge reader, automatically log on to all information sources according to his user profile, and gain immediate access to his individual presets.



## Multimedia IPTV

WEYTEC smartCONTROL features a web-based interface to display and control multimedia streams like IPTV and IP radio channels in predefined devices such as the smartTOUCH keyboard.

# HIGHLIGHTS

## WEYTEC smartCONTROL

With WEYTEC smartControl, defined incidents appear as **audible or acoustic alarms** on screens or a video wall.

**Get the most out of third-party peripherals** by integrating them with the WEYTEC distributionPLATFORM solution and smartTOUCH keyboards.

**Stay focused on key tasks** by automating certain aspects of alarm management and minimizing effort spent on standard procedures like access and lighting control.

In modern control rooms, the workplace is an **ergonomic cockpit**. Open the door, dim the lights or turn up the air conditioning with a single click on the WEYTEC smartTOUCH keyboard.

### Your Benefits

- **Availability**  
Incidents appear as audible or acoustic alarms
- **Cost effectiveness**  
Integrate third party peripherals
- **Performance**  
Automate standard procedures
- **Ergonomics**  
Modern workplaces are ergonomic cockpits

